

# SPIRAL Partnerships

Cultivating Partnerships for Inclusive,  
Resilient, and Nature-Positive Value  
Chains to Regenerate Rural  
Economies and Ecosystem Health

**SPIRAL**  
Small Producer  
Inclusivity Alliance



A Social Impact Venture by Wild Asia

**TOWARDS TRACEABLE &  
SUSTAINABLE PALM OIL**

**Overview**

Ver 2.1 Mar 2024

# How we started Wild Asia

The seeds of Wild Asia were sown over 30 years ago.

From studying tropical biodiversity to developing initiatives to protect nature.

---



Dr Reza Azmi  
Founder and  
Executive Director  
of Wild Asia  
One of the 5  
Founders

# How our social enterprise works

Wild Asia has been working for over the last 20 years to innovate ways to support sustainable production providing technical assistance and improving market access.



Since 2010 we support:  
**2,000** Independent Producers  
**50,000 ha** Production Area  
In Malaysia & Thailand

## HOW WE WORK

Enabled  
through SPIRAL  
Partnerships

Network of Partners to  
enable sustainable  
production

Delivered in  
Production  
Landscapes

Living Labs with  
producers, supply chain  
actors and buyers



SPIRAL

## WHAT WE DO

Technical  
Assistance

Small Producers,  
Dealers and Mills

Improve Market  
Access through  
Global Certification

Compliance and  
value-added certification



WAGS

1

Context

*"We are now so numerous, so powerful, so all-pervasive, the mechanisms that we have for destruction are so wholesale and so frighteningly effective, that we can actually exterminate whole ecosystems without even noticing it."*

Source: David Attenborough, from his speech "A Life on Our Planet."

# World Living Planet Index: 1970-2018

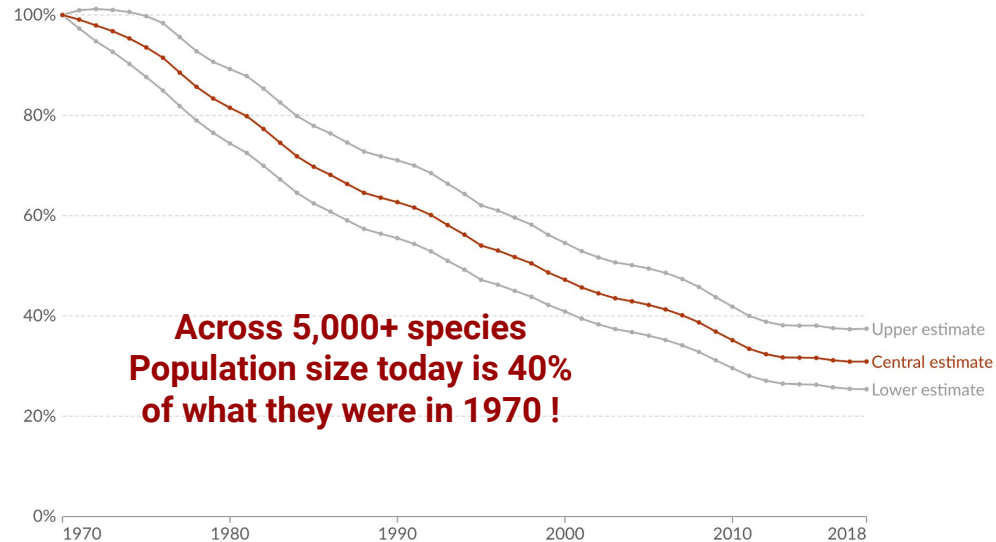
## Average decline in monitored wildlife populations



### Living Planet Index, World

Our World  
in Data

The Living Planet Index (LPI) measures the average decline in monitored wildlife populations<sup>1</sup>. The index value measures the change in abundance in 31,821 populations across 5,230 species relative to the year 1970 (i.e. 1970 = 100%).



Data source: World Wildlife Fund (WWF) and Zoological Society of London

OurWorldInData.org/biodiversity | CC BY

**1. Population:** A population is a group of individuals of the same species that live in the same geographic area. A species will often have multiple or many populations, each living in a different area.

# Planetary Boundaries Indicators: 2023

The planetary boundaries concept presents a set of nine planetary boundaries within which humanity can continue to develop and thrive for generations to come



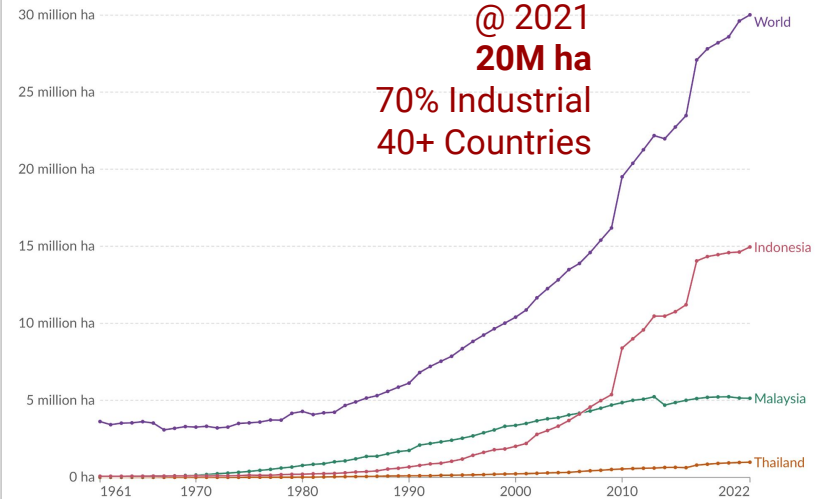
**By 2023, we have  
overshot 6 of 9  
planetary  
boundaries**

# Rise of industrial palm oil in less than 200 years

From 19th-century West African traders to contemporary plantation owners, commerce, private capital, and colonialism have profoundly shaped the landscape of modern agriculture.



Land use for palm oil production



Data source: Food and Agriculture Organization of the United Nations (2023)

OurWorldInData.org/land-use | CC BY

# But can “industrial” oil palm be sustainable?

We anticipate that over 600,000 ha\* of oil palm in Malaysia will be due for replanting. What will the impact be on our waterways? Will this increase risk of flooding? Other ecosystem services?

\* MPOB [source](#) “664,000ha of oil palm trees in the country that are above the 25-year mark”

*"Fungi and bacteria play a central role in the web of life. They are the agents of decomposition, turning the dead into life, and they form networks that stitch ecosystems together."*

Source: Merlin Sheldrake, "Entangled Life: How Fungi Make Our Worlds, Change Our Minds & Shape Our Futures" (2020)

# We figured out how to regenerate our soils

Smallholders showed us the way. We now understand how farming can work with biodiversity & rebuild ecosystem services.



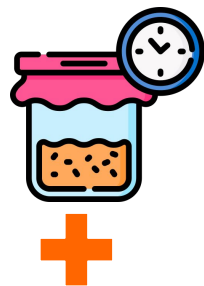
## WAGS BIO is our solution to scale regenerative agriculture

- Understands the way nature works
- Reduces chemicals, disturbances and improves soil naturally
- We developed the approach amongst smallholder farmers
- We now have started to work with Estates



# We developed a staged-approach

We adapted methods along a continuum - starting with low-skill / low tech as the starting point. Interventions are focussed on “BIO Intensification Zones”.

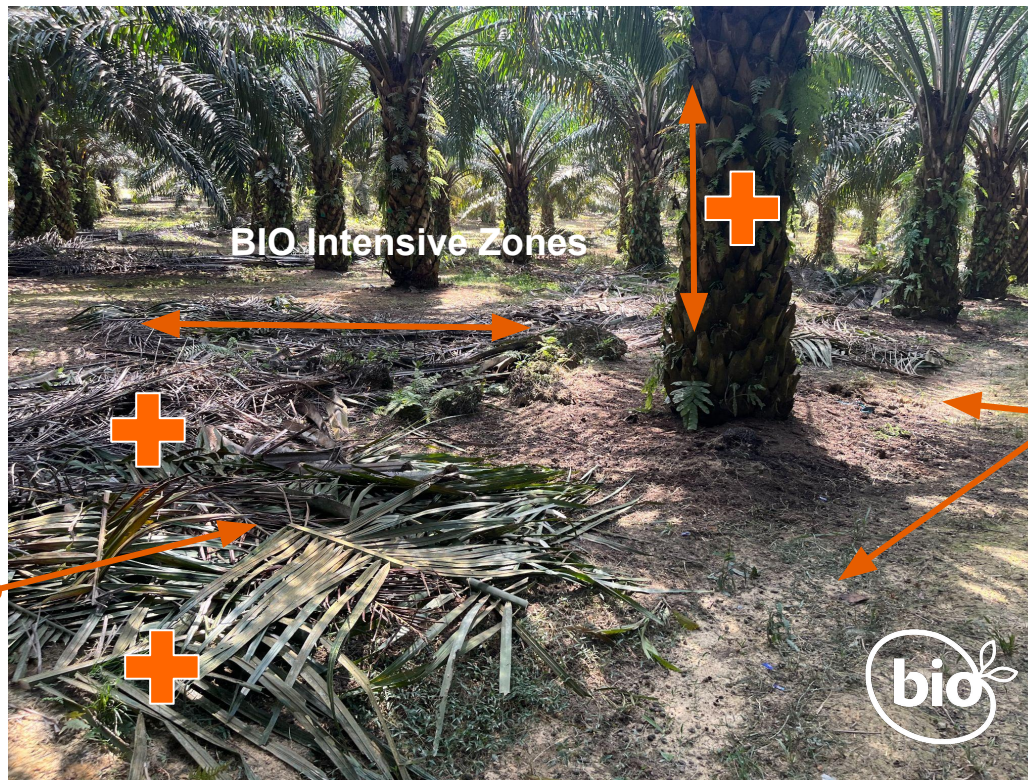


## 3 - Enhance the Microbiology

Fermentation skills for enhancing Bacteria or Fungi (Stage 2)

## 1 - Improve Frond stacks

Cover more Ground (Stage 1)



## 2 - Allow more plant diversity for “cut & drop”

Improves moisture and food for soil & creates more habitat (Stage 1)





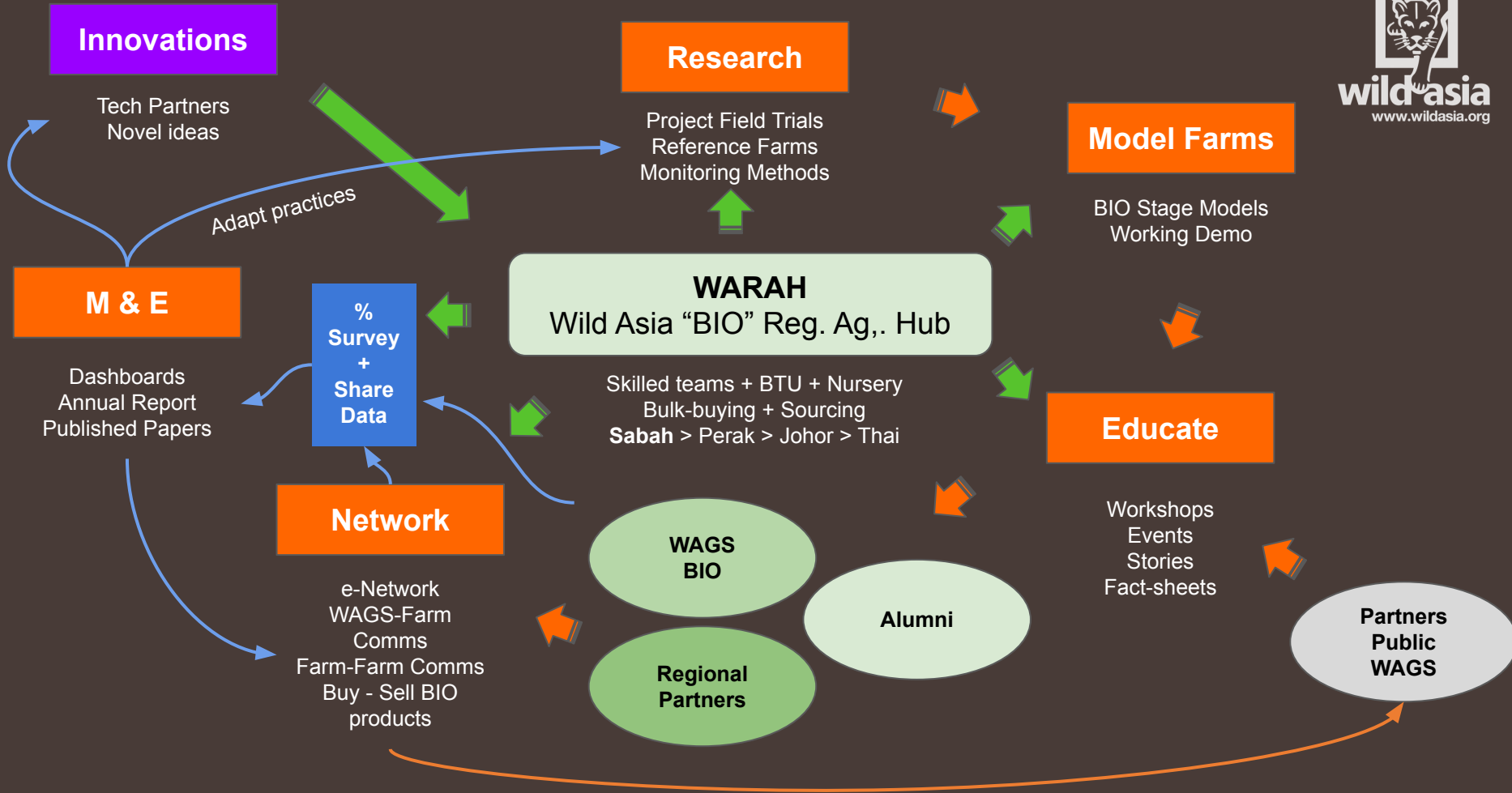
Since 2019 we support:

**88** Small Producers  
have started their  
journey towards  
regenerative oil palm.

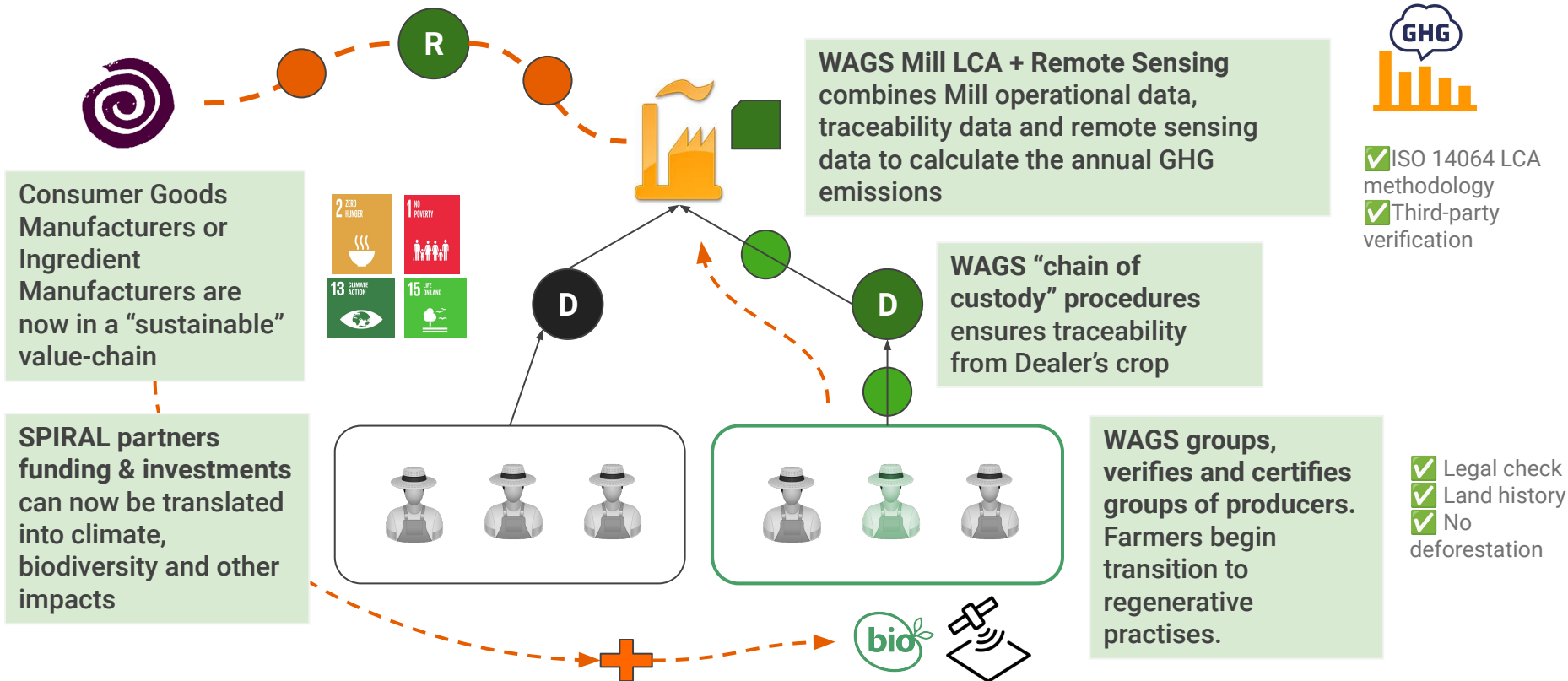
**16% of 374 ha**

*"You never change things by fighting the existing reality. To change something, build a new model that makes the existing model obsolete."*

Source: Doughnut Economics: Seven Ways to Think Like a 21st-Century Economist" by Kate Raworth



## Our Model for Inclusive, Resilient, and Nature-Positive Value Chains.



# SPIRAL Living Labs - Today

Living Labs are landscapes where we work to focus value-chain interventions to innovate, test, and scale workable solutions that drive our mission.



10 SPIRAL Partners  
(Palm Buyers) Today

L'ORÉAL

Kellogg's

seventh  
generation

SPIRAL  
Connect  
2 SPIRAL  
Palm Buyers



## WAGS Partnerships

WAGS works to connect our farmers to Mills & Dealers that are progressive and support our Mission



Borneo  
Sabah

4 Active Mill Partners  
8 Active Dealer  
Partners

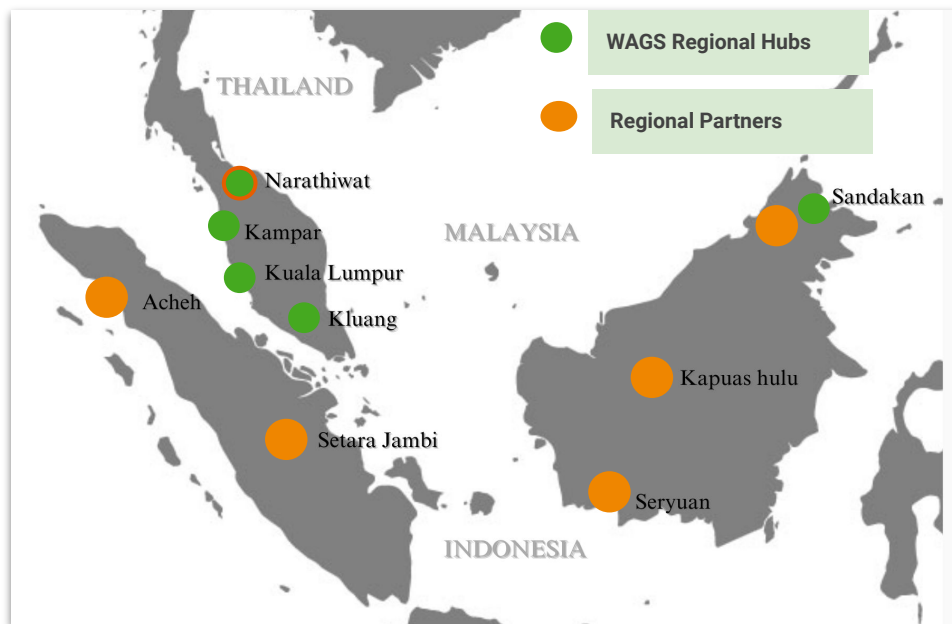
Peninsular Malaysia  
Johor, Perak and  
Selangor

5 Active Mill Partners  
4 Active Dealer  
Partners

52 Total Mills and 90  
Total Dealers Connected  
to WAGS Today (2023)



WAGS manages 50,000+ hectares of oil palm production and assists regional partners in leveraging our expertise



# SPIRAL Living Labs

Cultivating Partnerships for Inclusive, Resilient, and Nature-Positive Value Chains to Regenerate Rural Economies and Ecosystem Health



**You Tube**  
@wildasia

*"Draw on knowledge and wisdom  
from the past to conceive  
solutions in the present with  
future generations in mind"*

Source: Walking backwards into the future:  
Indigenous wisdom within design education  
by Nan Catherine O'Sullivan (2018).





**Contact us for more details**

**Head Office:**

Upper Penthouse  
Wisma RKT  
No 2 Jalan Raja Abdullah  
50300 Kuala Lumpur

[info@wildasia.org](mailto:info@wildasia.org)

<http://oilpalm.wildasia.org>

**สำนักงานประเทศไทย (Thailand Office):**

บริษัท ไวลด์เอเชีย (ประเทศไทย) จำกัด  
999/111 ถ.มหาราช  
ต.ปากน้ำ อ.เมือง  
กระบี่ 84250

[wags-thailand@wildasia.org](mailto:wags-thailand@wildasia.org)

---

**TOWARDS TRACEABLE &  
SUSTAINABLE PALM OIL**