



SAN **MEMBERSHIP** STRUCTURE

→ Foreword 2

→ Expectations 3

→ Benefits 3

→ Structure 4

→ Governance 6

The Sustainable Agriculture Network (SAN) is a global collaborative network of organizations committed to shaping the agriculture the world needs through collective impact.

The SAN membership is open to NGOs, academic and research institutions, social-enterprises, inter-government agencies, and other agricultural stakeholders playing a vital role in improving this sector and its impact on nature and human wellbeing.

Applications for becoming a SAN Member will be evaluated by the SAN Secretariat and the Membership Committee of the Board of Directors.

Joining efforts to accelerate change

Being part of SAN means joining a network of organizations worldwide that share the vision of a world in which agriculture is an agent of positive change, a generator of rural prosperity while protecting biodiversity, the atmosphere and natural resources.

The SAN seeks members that share this vision and are committed to the exchange of knowledge and collaborative work, recognizing that joining efforts is the only way to achieve large-scale impact.

Joining the SAN means multiplying the impact of your organization, having global technical support, and having the opportunity to expand the scope of your work in the eyes of donor agencies and companies.

The 2019-2024 SAN Strategic Plan aims at a dynamic growth of our membership to increase the overall impact of our work and provide more significant advantages to our partners.

What does SAN expect from its members?

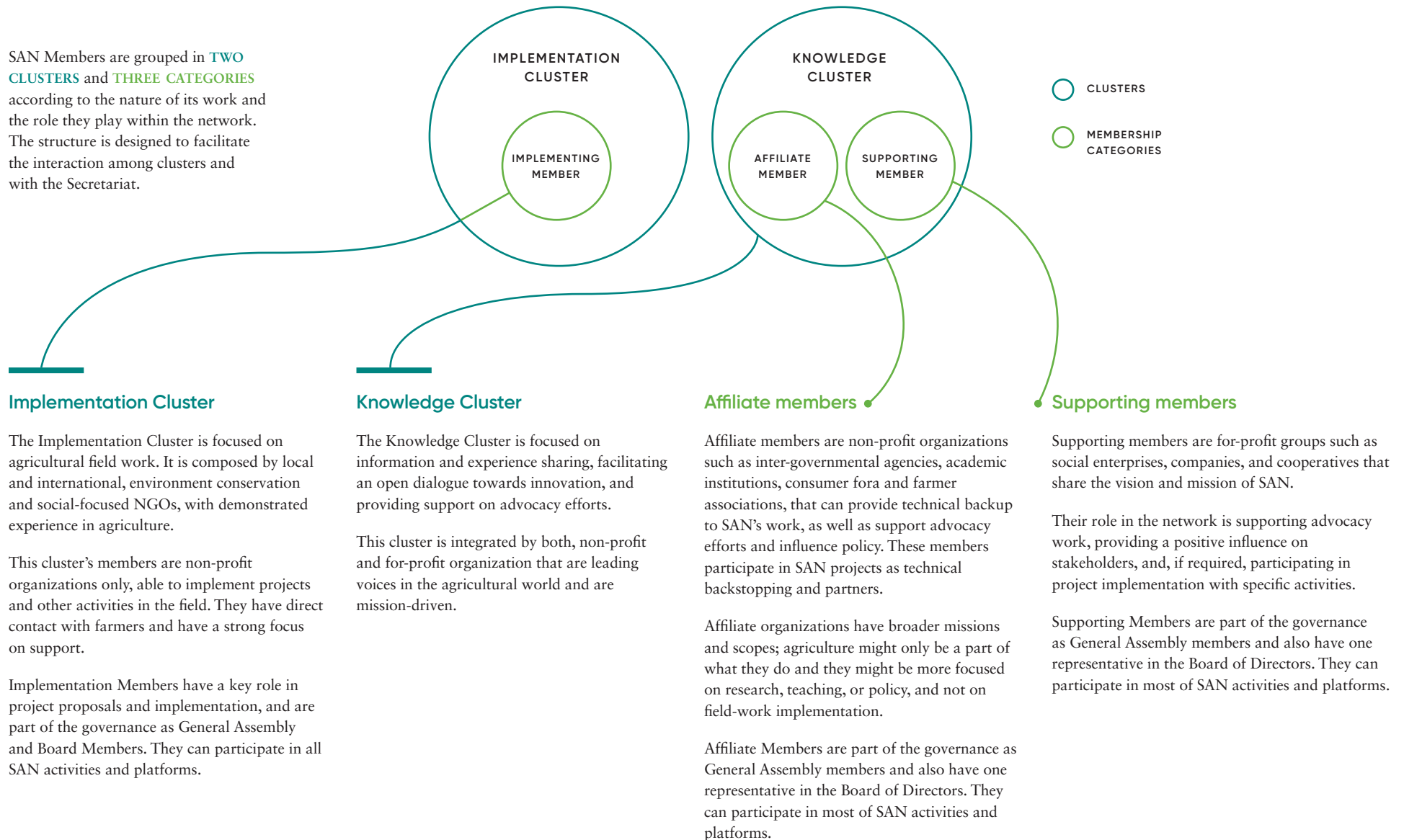
- Participate in the promotion and development of the SAN, its mission, and its strategy.
- Comply with and enforce the Corporate Bylaws of the SAN.
- To be an ambassador of the SAN, which represents the organization positively in its national or regional scope.
- Attend regularly the General Assemblies and meetings of the Board of Directors (if you are a member).
- Perform the positions and work commissions conferred by the Assembly and the Board of Directors.
- Appoint a member of your staff as an official representative for the liaison with the SAN.
- Have availability to support the Secretariat and the other partners in terms of exchange of knowledge, information, experiences, and tools.
- Identify project opportunities and funding sources that members and the Secretariat could take advantage of.
- Willingness to collaborate, being able to work on resource mobilization and identification of projects. Ability to extend the contact with stakeholders, share knowledge, and be ready to implement actions on the field.
- Members with diverse expertise related to agriculture (IT, research, social issues, law, climate change, policy development, etc.).
- Ability to influence the agricultural sector. Experience, commitment, and “muscle” to take actions according to its scope.

What does the SAN offer to its members?

- Being a member of a developing global network, with impacts beyond the traditional geographical approach of each partner (multiplier effect).
- Share knowledge globally; opportunity for exchanging ideas, materials, and experience, including participation in activities and projects of members in their countries.
- Development and use of tools and new technical solutions for agriculture.
- Participation in SAN programs, such as Sustainable Agriculture Framework (SAF), Farms for the Future, and the Intelligence Hub (iHub).
- Contact with a Secretariat that promotes the Network at the international level and opportunity to join efforts to find financing for projects of mutual interest.
- Have priority in participation and implementation in SAN projects.
- Have a voice and vote in the Associates Assemblies. Be part of the Board of Directors to decide on the work and priorities of the organization.

Membership structure

SAN Members are grouped in **TWO CLUSTERS** and **THREE CATEGORIES** according to the nature of its work and the role they play within the network. The structure is designed to facilitate the interaction among clusters and with the Secretariat.



	Category	Features	Role	Rights	Obligations
Implementation cluster	A. Implementing members	Environmental and social NGOs (local and international) NON-PROFIT	Active participation in project proposals and implementation. Part of the Network's governance	General Assembly member with right to vote. Eligible to be a voting Board member (regional representation). Priority for projects' implementation. Free access to iHub and SAN tools. Be represented in technical advisory groups consisting of member's technical personnel. Be a Farms for the Future manager and implementer.	Participation in regional working groups. Be an ambassador of SAN. Use the SAN M&E system for projects related to SAN. Define at least two annual goals aligned to SAN workplan and report against them.
	B. Affiliate members	Inter-governmental organizations. Academic/research institutions. Inter-governmental agencies. Consumer organizations / fora. NON-PROFIT	Knowledge transfer. Advocacy / influence. Technical backstopping. Project partners.	General Assembly member with right to vote. One seat in the Board with voting right. Participation in the knowledge platform and the thematic working groups. Be represented in technical advisory groups consisting of member's technical personnel. Access to iHub and SAN tools for a reduced fee.	Provide input (technical or political) when required. Share information and participate actively in the network's dialogue. Promote sustainable agriculture and rural development.
Knowledge cluster	C. Supporting members	Social enterprises. Companies. Cooperatives and Farmer organizations FOR-PROFIT	Knowledge transfer. Advocacy / influence. Support in project implementation.	General Assembly member with right to vote. 1 seat in the Board with voting right. Participation in technical advisory groups consisting of member's technical personnel. Access to the knowledge platform. Access to iHub and SAN tools for reduced a fee.	Support the SAN mission through funding opportunities. Provide input when required. Share information with the network. Active participation in the network's dialogue. Promote sustainable agriculture.

SAN Governance Structure

The SAN governance is composed by three bodies: the General Assembly, the Board of Directors and the Secretariat.

1. General Assembly

The SAN General Assembly is the supreme governance body and it is composed of all SAN members. The General Assembly meets at least once a year and elects the Board of Directors to manage the organization, but the most sensitive decisions, like approval of strategic plans and annual financial statements, must be taken by the General Assembly, where every member, independently of its category, has one vote.

2. The Board of Directors

The Board has a maximum of 11 seats and holds at least two meetings per year. The service period of Board members is 3 years.

The Chair, Vice-Chair and Treasurer make the Executive Committee which is responsible for the leadership of the Board; and the Board has collective responsibility for the discharge of its responsibilities. The Board appoints Committees with responsibility for advising the Board on aspects of its work requiring particular focus.

The Board must approve the annual plans, goals and budgets for the SAN programs, as well as provide strategic guidance for the activities of the SAN carried out by the Secretariat.

The Board also appoints and supervise the Executive Director to run the SAN Secretariat and manage its staff.

The Board of Directors is composed by nine representatives of SAN Implementing Members, according to a geographical share (2 seats for members from Africa, 2 seats from America, 2 seats from Asia, 2 seats from Europe, and 1 seat for Oceania), one representative from the Affiliate Members, and one representative from the Supporting Members.

3. The Secretariat

The Secretariat is in charge of the administration and day-to-day operation of SAN. Some of the responsibilities entrusted to the Secretariat are to execute the resolutions approved by the Board, to be responsible for the finances, accounting and administration of SAN, as well as to ensure that the applicable legal provisions are complied with in those countries where the SAN has operations and projects.

The Secretariat is also constantly designing and developing new technical tools, programs and projects for promoting and implementing sustainable agriculture practices and policies around the world, and provides training and support to the SAN Members.