



Sustainable Agriculture Network

Supporting rural **landscapes** to boost sustainable production

A flagship initiative by
SAN, proud member of
the Circular
Bioeconomy Alliance



**CIRCULAR
BIOECONOMY
ALLIANCE**

SAN's integrated TerraViva solution is a collective impact solution led by coffee-growing communities in Colombia to develop sustainable productive landscapes. This is an emerging initiative within the Living Lab framework of the Circular Bioeconomy Alliance, to integrate landscapes, livelihoods, and market systems to support small scale producers and their communities adapt to climate change and restore nature, making them part of the climate solution.

Unlike other landscape approaches, TerraViva recognizes local capacities and a strong base of governance as important assets for the targeted landscape. It embraces a community-led approach in which a common vision and purpose built from the perspective of local stakeholders leads to collective solutions to meet both production and environmental goals.

 **TerraViva**
Sustainable Agriculture Network

A ROAD TO COLLECTIVE IMPACT



Households will be supported to diversify productive systems that strengthen their resilience and food security.

Coffee-dominated landscapes will gain enhanced ecosystem services through strengthened adaptive capacity.



Nature-based business will be expanded and/or created and contribute to a circular bioeconomy.

A STRONG CONSORTIUM

A group of strategic partners provides experience and technical knowledge to the community to support its process:

CORE PARTNERS



Alliance



OUR THEORY OF CHANGE

Collective impacts



Service delivery



Shared vision

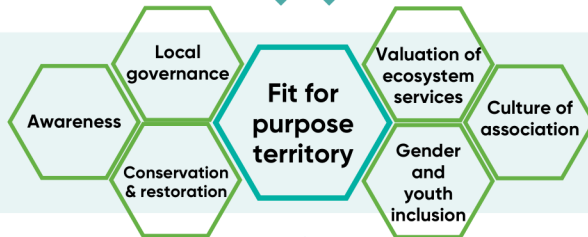


Common territorial agenda

Sustainable sourcing regions



Enabling conditions



TerraViva initiative



“By enabling access to climate-smart solutions, we can address poverty, biodiversity loss and climate change in the world's top producer of washed Arabica coffee”

LET'S TALK

Jim O'Neil

Senior Project Manager, TerraViva

✉ joneil@san.eco

📞 +57 320 571 2735

🌐 sustainableagriculture.eco

Suggestions, inquiries and complaints

✉ pqr.terraviva@san.eco

📞 +57 321 981 5050

 **TerraViva**



UK Government



Alianza

